

## Industrial, Design Solutions & Original Supplier Reference Pictures and

### Technical Specifications----95W LED Lamp

<b>LED-N01 95W Power</b>	
<b>LED Lighting Efficiency: 12000LM-15000LM      Lifespan: &gt;80000Hrs</b>	
	
<b>Gray &amp; Blue, Black, White Color</b>	<b>Lamps Testing</b>
	

#### Material Descriptions:

- 1.) Lamp Body: High-Pressure Die-Casting Aluminum. Corrosion Resistant
- 2.) Application with Polyester Substance in its Surface.
- 3.) Implement of Reflect: Made of High Purity Aluminum.
- 4.) Cover: High Strength and High Transparent Toughened Glass
- 5.) Fastener Bolt and Screws: Stainless Steel      6.) Arm Diameter: 60mm

#### Technical Parameters:

Chip	Bridgelux
Body Size	770*300*75mm
Lamp Efficiency	> 92%
Central Illuminance	> 35LUX
CT	2700K-6500K is available
Ra	> 75%
UO	> 0.40
UI	> 0.60
TI	< 15
Power Factor	> 0.95
IP	66

Working Temperature	-40°C---+60°C
Led Dissipation Angle	> 120 Degree
G. Weight	8.0KGS

**Reference Pictures and Technical Specifications----Pole System**

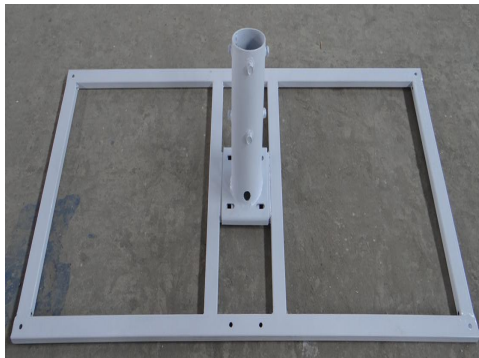
**10M Steel Pole, Painted with Requested Color**

**Steel, Q235, Plastic Coated, Hot-Dip Galvanized, Rust Proof.**



Pole Height.....10M  
 Material.....Q235  
 Top Diameter.....200mm  
 Bottom Diameter.....350mm  
 Pole Thickness.....5mm  
 Painting.....Wanted Color  
 With Arm, Bracket, Flange, Fittings, Cable, Etc  
 Lifespan.....More than 20 years  
**Resistant to Wind: ≥160KM/H**

**Bracket for Solar Panel, Rust Proof, Size: 1640\*992mm**



**Lighting Arm and fixing structure , Rust Proof**

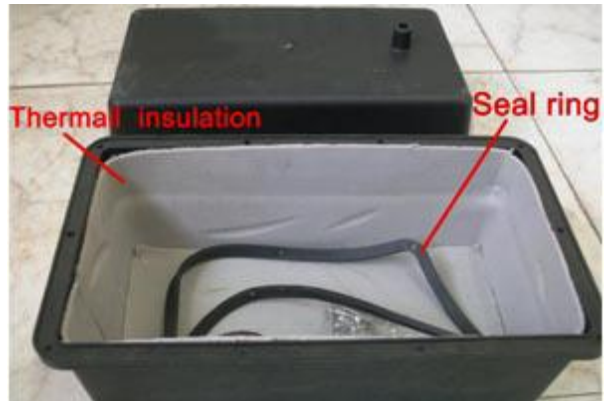
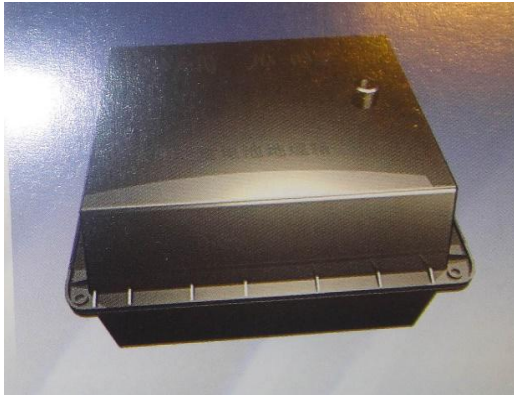


**Reference Pictures and Technical Specifications----Batteries box**

**Batteries box, IP68**

**One battery box is for installing two batteries together**

**Outer size: 613\*613\*315mm      Internal size:550\*550\*270mm**



**Reference Pictures and Technical Specifications----Base Plate and Bolts**

**Base plate and bolts, Rust Proof**

**We Make It and End Buyer Just Need Assemble it Locally, Buyer Should Make IT Locally with Cement**



**Reference Pictures and Technical Specifications----Solar Controller**

<b>20A/24V MPPT Solar Controller</b>	
<b>Switching the light on/off automatically</b>	
<b>Model: Tracer5206EPLI</b>	<b>Automatic Light Control and Time Control System</b>
	Intelligent solar Controller Temperature Compensation. Overall dimension.....212.25×105×52.1(mm) Mounting dimension.....198.25×94(mm) Net Weight.....1.63kg Working Temperature: -40°C to 60°C Over-charging/discharging Protection Reverse-connection Protection Switch on Automatically with Light Sensor; Switch off after designed Hours later. Lifespan.....5-10years
Packing Outside Picture	Packing Inside Picture
	

**Reference Pictures and Technical Specifications----Cable**

<b>Cable</b>	<b>Picture</b>
<p><b>4.0 mm square core, two cores, red for positive, black for negative</b></p> <p>Insulation Temperature: -20°C to 70°C                  Cables from controller to lamp to Solar panel to solar batteries.                  Size: 2*4 mm<sup>2</sup>                  Lifespan: 25years                  Cover color has black and white, but inside, it has negative and positive</p>	